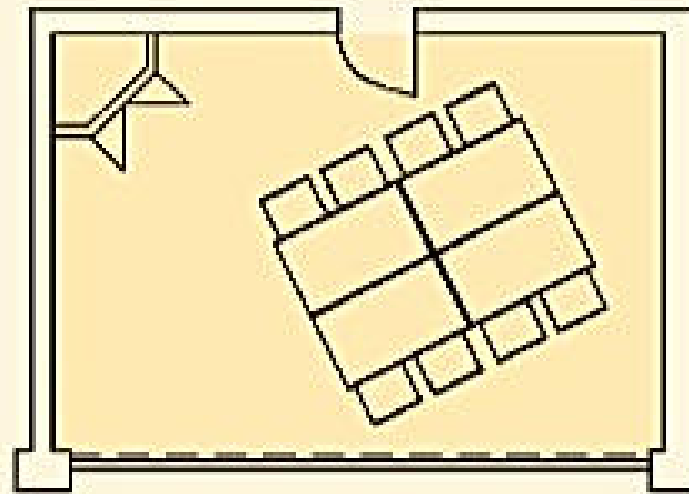
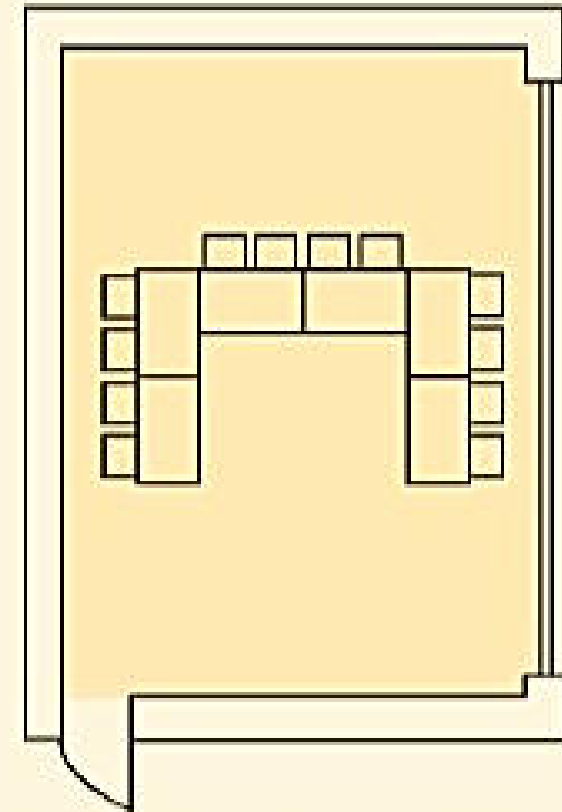


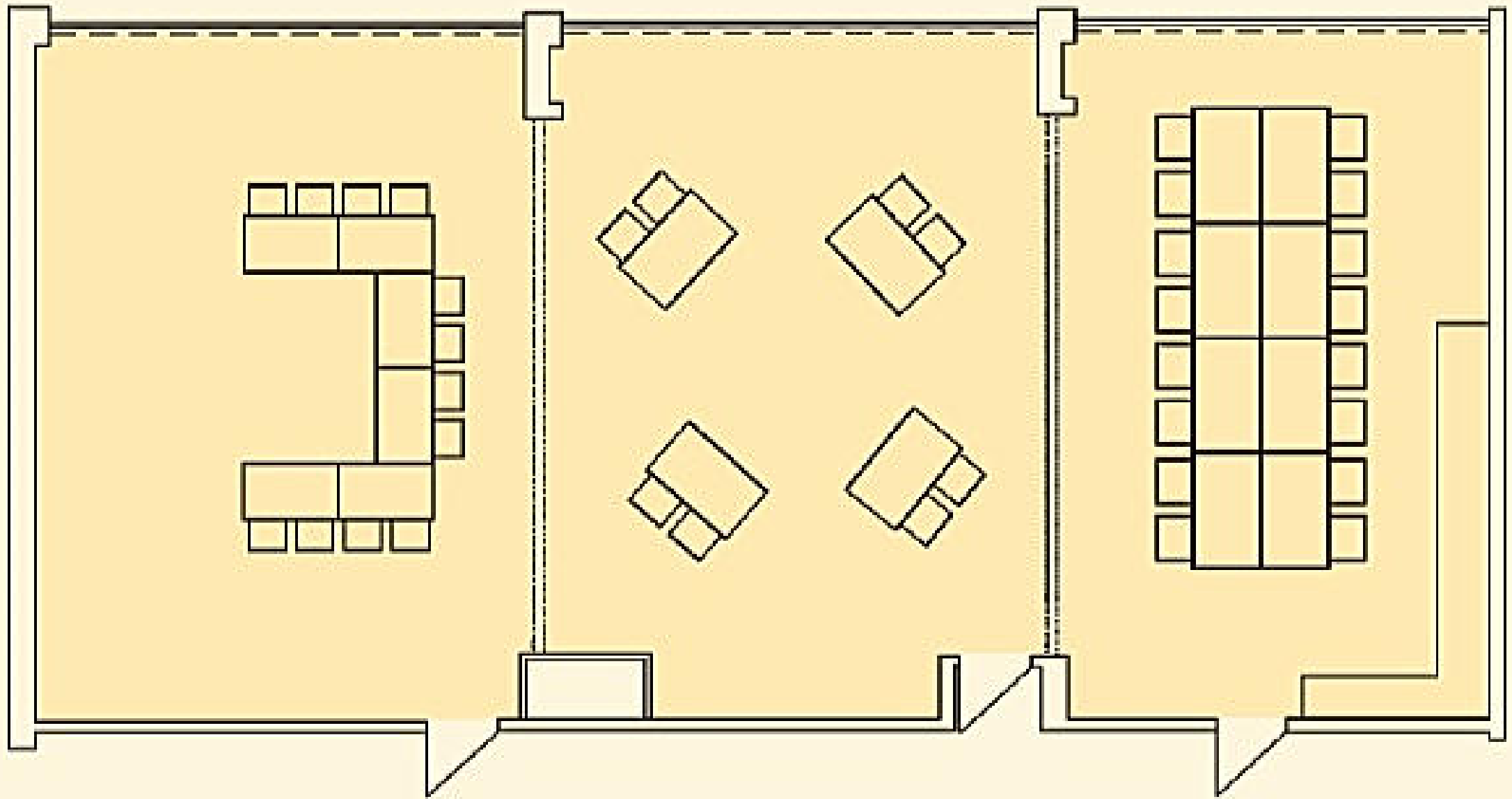
TAGUNGSRÄUME



Bürgerturm – 30 qm



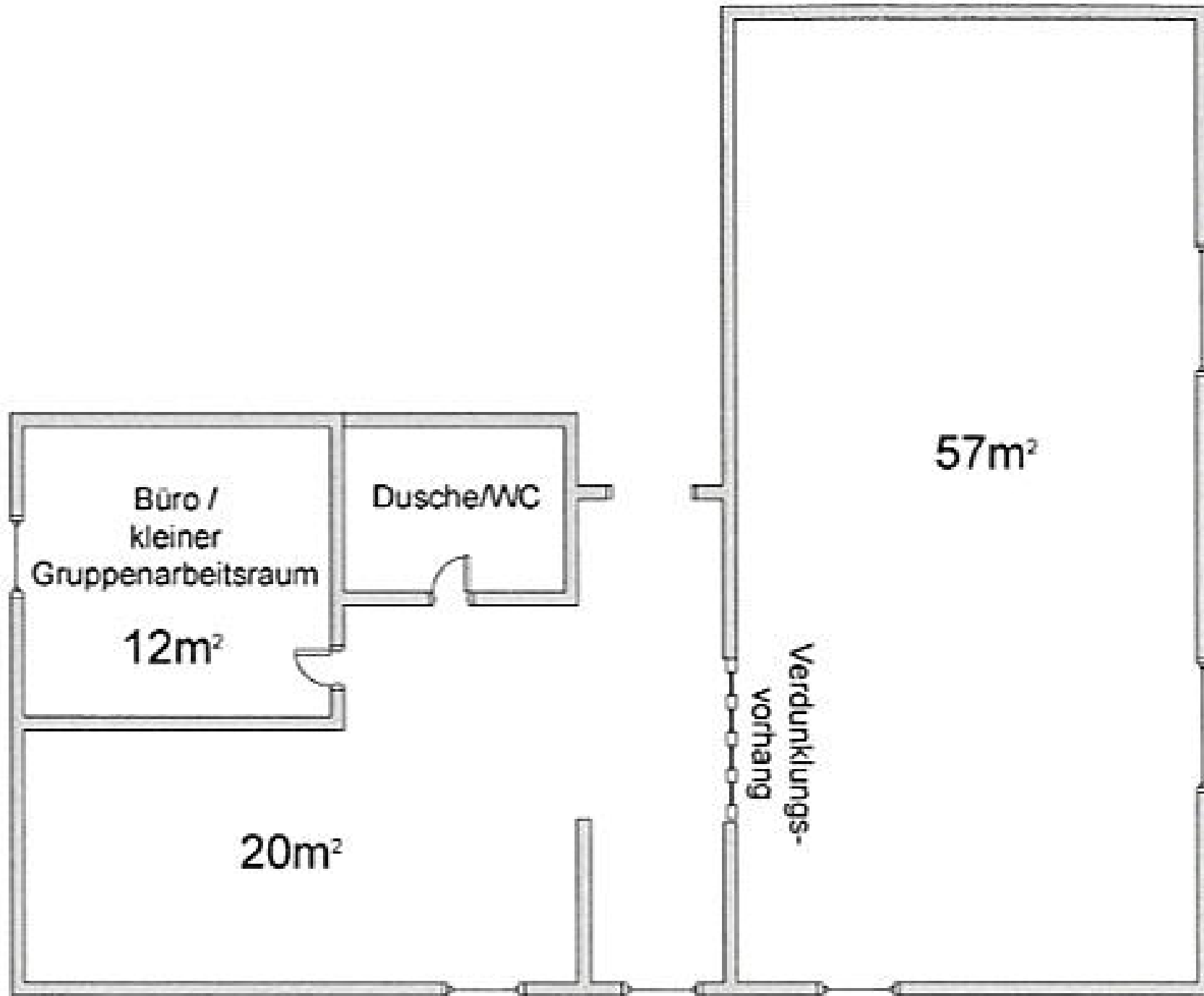
Ahlheimer – 47 qm












Obertor – 80 qm

Fuldablick – 80 qm

Untertor – 70 qm



Landgraf 90m^2

Tagungsräume im Posthotel	Block- form 	Parla- ment 	Stuhl- reihen 	U-Form, (T-Form) 	Stuhl- kreis 	Einzel- tische 	Raumtiefex Raumbreite 	Raum- fläche 	Raum- höhe 
BÜRGERTURM	12	12	15	16(T)	12	4	6,20 x 4,50	28	2,80
ALHEIMER	16	24	25	18	24	9	8,70 x 5,40	47	2,60
LANDGRAF	20	30	30	22	26	15	11 x 5,2 + 3,2 x 7,7	57 - 77	3,20
OBERTOR	24	30	40	24	25	15	10,00 x 8,00	80	3,20
FULDABLICK	24	30	40	24	25	15	10,00 x 8,00	80	3,20
UNTERTOR	20	24	30	20	18	12	10,00 x 7,00	70	3,20
SAAL	75	100	150	70	70	42	10,00 x 23,00	230	3,20
OBERTOR + FULDABLICK	50	80	80	40	50	30	10,00 x 16,00	160	3,20
UNTERTOR + FULDABLICK	45	60	70	35	40	27	10,00 x 15,00	150	3,20